

THANK YOU TO OUR ANNUAL MEETING SPONSORS



MedStar St. Mary's
Hospital



ST. MARY'S COUNTY
HEALTH DEPARTMENT



UnitedHealthcare®



MARYLAND DEPARTMENT OF
HUMAN SERVICES



HEALTHIEST
MARYLAND

Where the healthiest choice is easy



OPENING SESSION: SEPTEMBER 19, 2019

HEALTHY ST. MARY'S PARTNERSHIP ANNUAL MEETING

STEPHEN T. MICHAELS, MD, CHIEF OPERATING OFFICER AND
CHIEF MEDICAL OFFICER AT MEDSTAR ST MARY'S HOSPITAL
AND CO-CHAIR OF THE HEALTHY ST. MARY'S PARTNERSHIP

WHAT IS THE HEALTHY ST. MARY'S PARTNERSHIP?

- Coalition working toward local health improvement
- Community members and partner organizations
- Assess health needs
- Identify what's important
- Action & collaboration
- Evaluate efforts



ACTION TEAMS WORK TO ADDRESS PRIORITY HEALTH NEEDS

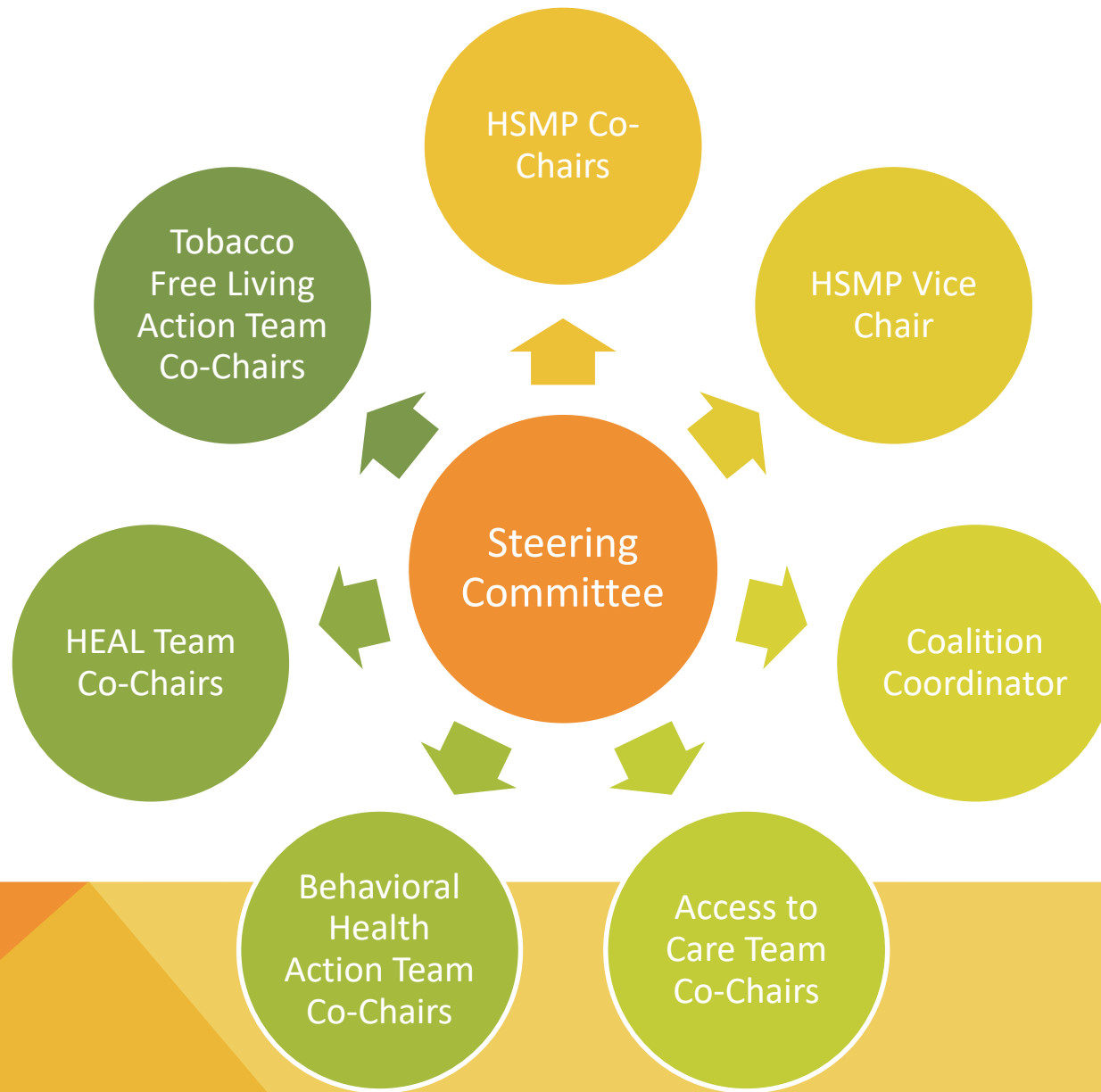


Access to
Care

Behavioral
Health

Healthy
Eating &
Active
Living

Tobacco
Free
Living



DOWN TO BUSINESS

So...what has HSMP been working on this past year?

ACTION TEAM ACCOMPLISHMENTS

Access to Care Action Team

- **Parental Education on Dental Care for Children**
 - What is covered by Medicaid
 - The importance of preventative care
- **Wheels to Wellness**
 - **1,500+** rides
 - **12,000+** miles in St. Mary's County

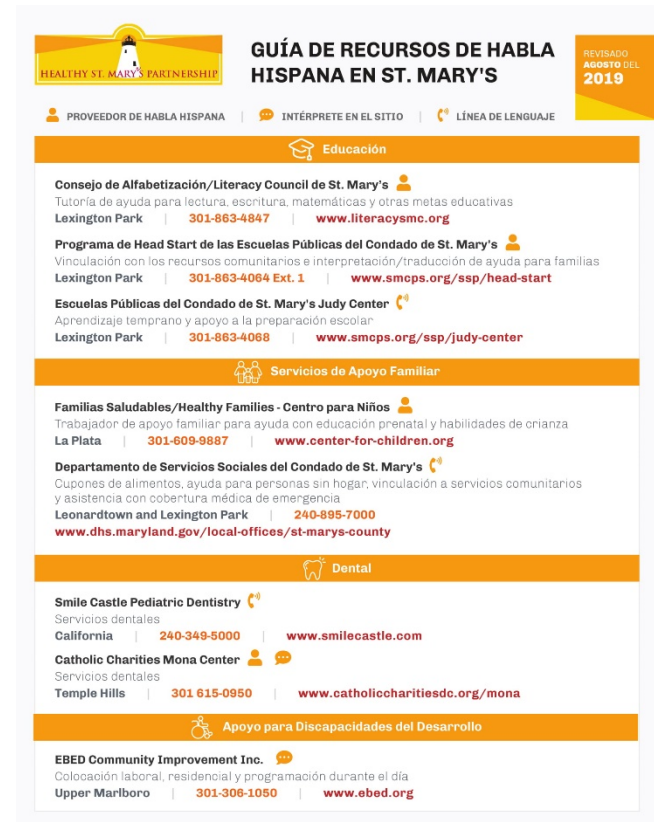
Co-Chairs

Lori Werrell – MedStar St. Mary's Hospital
Mike Shaw – St. Mary's County Health Department

ACTION TEAM ACCOMPLISHMENTS

Access to Care Action Team

- Guide to Spanish Speaking Resources
- Chronic Disease Self-Management Programs in Spanish



HEALTHY ST. MARY'S PARTNERSHIP | **GUÍA DE RECURSOS DE HABLA HISPANA EN ST. MARY'S** | REVISADO AGOSTO DEL 2019

PROVEEDOR DE HABLA HISPANA | INTERPRETE EN EL SITIO | LÍNEA DE LENGUAJE

Educación

Consejo de Alfabetización/Literacy Council de St. Mary's
Tutoría de ayuda para lectura, escritura, matemáticas y otras metas educativas
Lexington Park | 301-863-4847 | www.literacysmc.org

Programa de Head Start de las Escuelas Públicas del Condado de St. Mary's
Vinculación con los recursos comunitarios e interpretación/traducción de ayuda para familias
Lexington Park | 301-863-4064 Ext. 1 | www.smops.org/ssp/head-start

Escuelas Públicas del Condado de St. Mary's Judy Center
Aprendizaje temprano y apoyo a la preparación escolar
Lexington Park | 301-863-4068 | www.smops.org/ssp/judy-center

Servicios de Apoyo Familiar

Familias Saludables/Healthy Families - Centro para Niños
Trabajador de apoyo familiar para ayuda con educación prenatal y habilidades de crianza
La Plata | 301-609-9887 | www.center-for-children.org

Departamento de Servicios Sociales del Condado de St. Mary's
Cupones de alimentos, ayuda para personas sin hogar, vinculación a servicios comunitarios y asistencia con cobertura médica de emergencia
Leonardtown and Lexington Park | 240-895-7000
www.dhs.maryland.gov/local-offices/st-marys-county

Dental

Smile Castle Pediatric Dentistry
Servicios dentales
California | 240-349-5000 | www.smilecastle.com

Catholic Charities Mona Center
Servicios dentales
Temple Hills | 301 615-0950 | www.catholiccharitiesdc.org/mona

Apoyo para Discapacidades del Desarrollo

EBED Community Improvement Inc.
Colocación laboral, residencial y programación durante el día
Upper Marlboro | 301-306-1050 | www.ebed.org

Co-Chairs

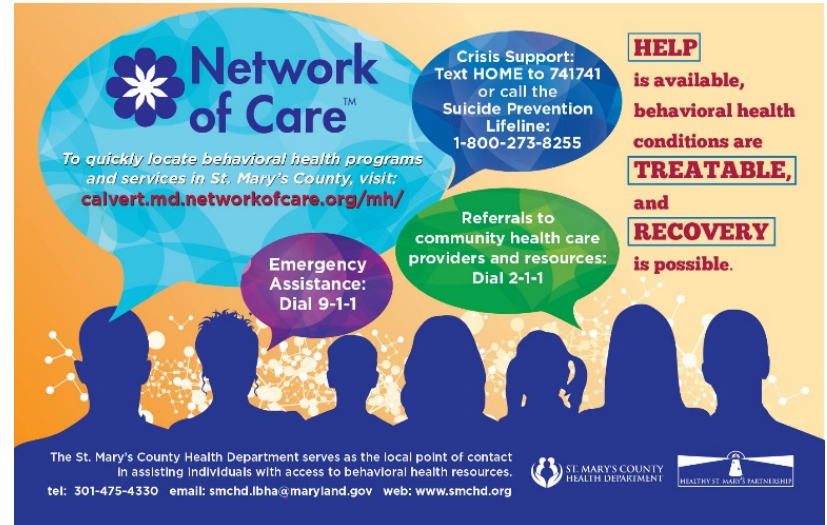
Lori Werrell – MedStar St. Mary's Hospital
Mike Shaw – St. Mary's County Health Department

ACTION TEAM ACCOMPLISHMENTS

Behavioral Health

Action Team (BHAT)

- Maryland Network of Care for Behavioral Health
- Crisis Services



Co-Chairs

Laura Webb – Walden Behavioral Health

Tammy Loewe – St. Mary's County Health Department

ACTION TEAM ACCOMPLISHMENTS

Behavioral Health Action Team (BHAT)

- **Youth Mentoring**
 - Needs Assessment
 - **100** parent surveys completed
 - **3** youth focus groups
 - **2** key informant interviews
 - Youth Mentoring Round Table Discussion
 - **34** attended

Co-Chairs

Laura Webb – Walden Behavioral Health

Tammy Loewe – St. Mary's County Health Department

ACTION TEAM ACCOMPLISHMENTS

Healthy Eating & Active Living (HEAL) Team

- **More to Explore Program**
 - Annual passport challenge that encourages community members to explore local parks and farmers markets
 - Enter the secret code found at each site for a chance to win prizes
 - Over **1,000 participants this year!**



Co-Chairs

Andrea Hamilton – MedStar St. Mary’s Hospital
Sue Veith– Department of Economic Development

ACTION TEAM ACCOMPLISHMENTS

Healthy Eating & Active Living (HEAL) Team

- Healthy Meeting Toolkit
- Healthy Food Drives
- Walk SMC



Healthy St. Mary's Partnership
Healthy Meeting Toolkit



Co-Chairs

Andrea Hamilton – MedStar St. Mary's Hospital
Sue Veith– Department of Economic Development

ACTION TEAM ACCOMPLISHMENTS

Tobacco Free Living (TFL) Team

- **Tobacco Free Environments**
 - St. Mary's County Government Grounds
- **Education on the Effects of Vaping and Smoking on the Lungs**
- **Tobacco 21 Town Hall**

Co-Chairs

Rebecca Jackson/Angela Cochran – St. Mary's County Health Department

Mike Brown – Unified Committee for Afro-American Contributions

ACTION TEAM ACCOMPLISHMENTS

Tobacco Free Living (TFL) Team

- **Junior Team**
 - 14 freshman/
sophomores
 - Tobacco 21
Advocacy
 - Stanford Course



Co-Chairs

Caitlin Kirkpatrick/Angela Cochran – St. Mary's County Health
Department

Mike Brown – Unified Committee for Afro-American Contributions

HOW CAN I HELP?

- **Stay Connected**
 - E-newsletter
 - Healthystmarys.com
- **Participate**
 - Team meetings
 - Advocacy work
 - Recruitment and development
- **Implement**
 - Align organizational work with Healthy St. Mary's 2020
 - Collaborate on strategies for health improvement

WHAT TO LOOK OUT FOR

- **Co-Chair Elections**
 - Nomination coming in October
- **CHIP/CHA process coming 2021**
- **TFL Jr Team Podcasts**

GENERAL INFORMATION

- Schedule
- Continuing Education Units (CEUS)
- Membership & Action Team Information
- HEAL Team Activities
- Evaluation Forms
- Bathrooms

THANK YOU TO OUR ANNUAL MEETING SPONSORS



MedStar St. Mary's
Hospital



ST. MARY'S COUNTY
HEALTH DEPARTMENT



UnitedHealthcare®



ST. MARY'S
COUNTY
RECREATION
& PARKS



Minority Outreach Coalition



MARYLAND DEPARTMENT OF
HUMAN SERVICES



CSM college of
southern maryland



HEALTHIEST
MARYLAND

Where the healthiest choice is easy