

**THE INSTITUTE FOR  
INNOVATION & IMPLEMENTATION**

Integrating Systems • Improving Outcomes

# St. Mary's County, Maryland MRSS Technical Assistance Meeting Readiness

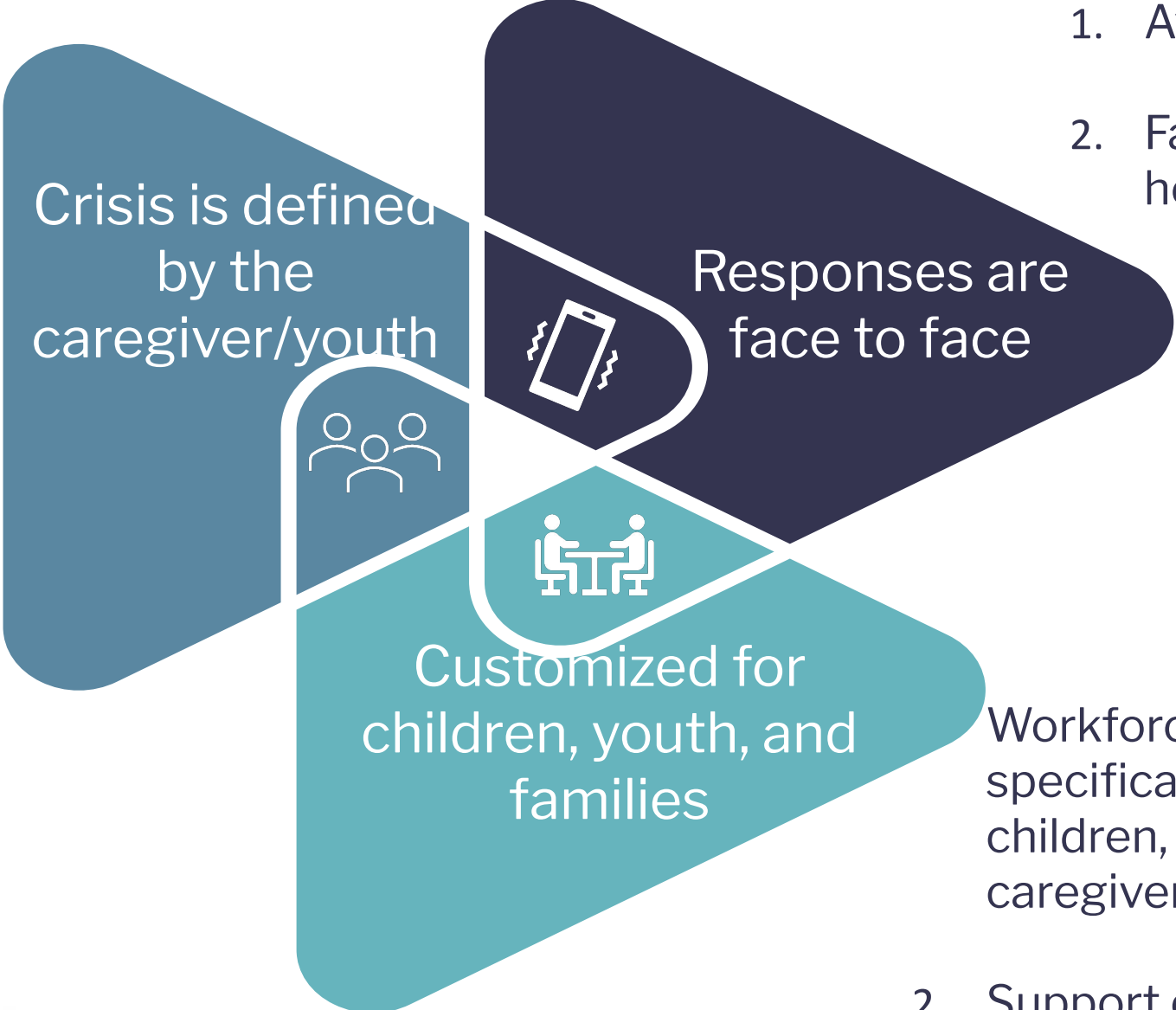
JULY 29, 2022

# Agenda

- Introductions
- MRSS Overview Review
  - Basic Principles
  - MRSS Continuum
- Readiness Conversation
- Review of Tool and Recommendations for Next Steps

# MRSS Basics

- 1. Screen in, not out
- 2. Callers know why and when they need help; we believe them

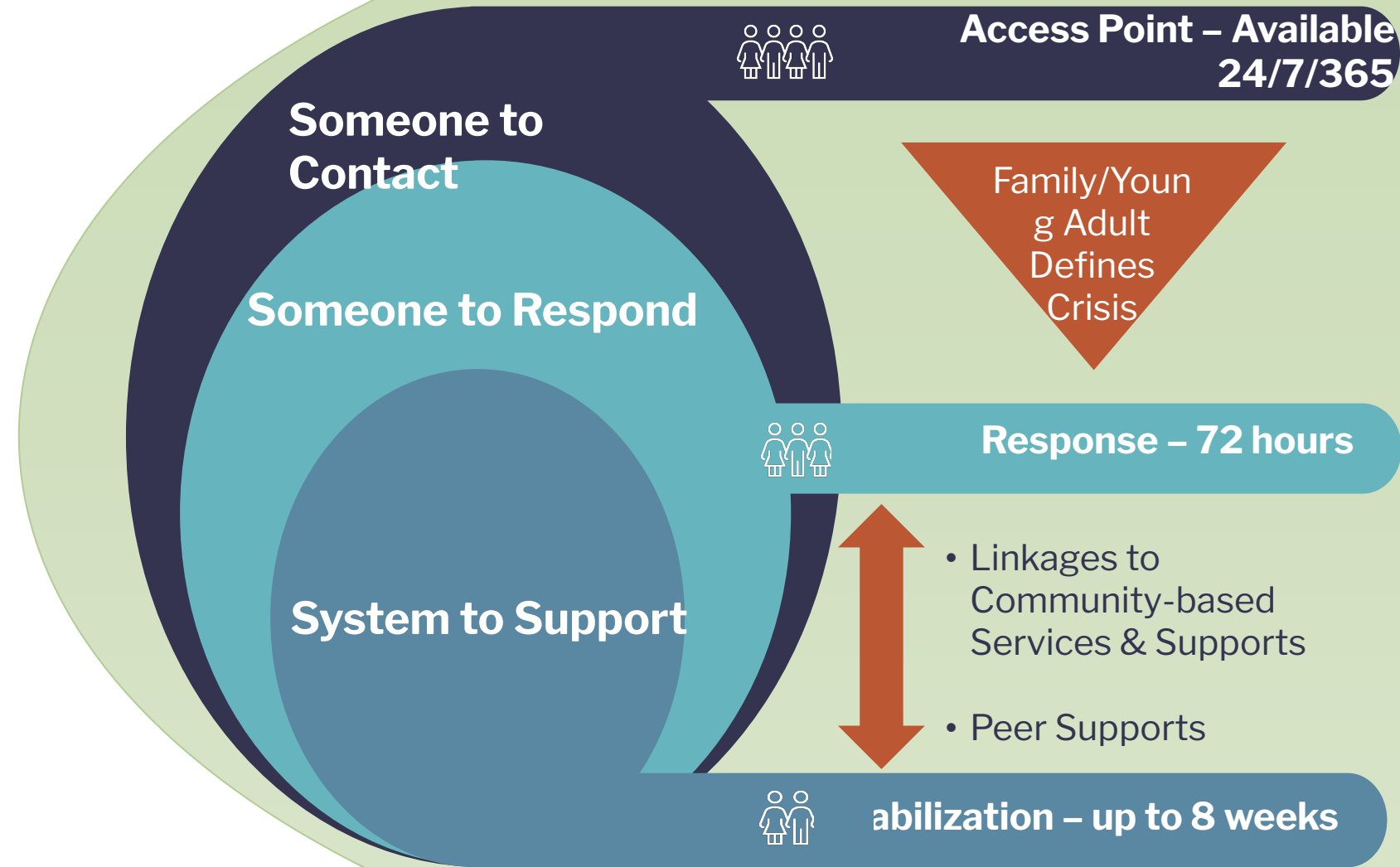


- 1. Availability 24/7/365
- 2. Face to Face within 1 hour

Workforce is trained specifically to respond to children, youth, and caregivers

- 2. Support occurs in homes and communities

# Continuum



- Screening & Assessment
- Home & Community Based Services & Supports
- Safety Planning
- Planned Respite
- Single Point of Access (Triage)
- In-person Mobile Response (De-escalation, Crisis Assessment, Safety Plan or Update)
- Intensive In-home Services
- Care Coordination
- Crisis Respite Care
- Short-term Residential Crisis

# Questions?

---

