



FOR YOUTH DEVELOPMENT®
FOR HEALTHY LIVING
FOR SOCIAL RESPONSIBILITY

BRINGING COMMUNITIES TOGETHER

ST. MARYS COUNTY FAMILY YMCA Capital
Campaign





ADDRESSING COMMUNITY NEEDS

Over the past decade, community leaders worked tirelessly to advocate for a community center that would provide programs and services for the residents of St. Mary's County. In 2019, the St. Mary's County Commissioners established an exploratory committee to substantiate community need, programs and services and possible locations. The Committee was also charged with determining if the YMCA could be the partner of choice.

Working with the YMCA of the Chesapeake, St. Mary's County commissioned a third-party study to determine need, location and potential involvement. The results were overwhelmingly positive showing a new YMCA located next to Great Mills High School could serve 10,000 community members on a regular basis!



CONNECTING COMMUNITIES
YMCA OF THE CHESAPEAKE, INC.

WHY THE YMCA?

- The Y of the Chesapeake has provided continuous service to the community since 1857.
- Today, we impact the lives of over 50,000 people of all ages, backgrounds, and abilities.
- As a not – for - profit community organization, no one is turned away due to the inability to pay.
- Expanded base of financial support granting \$2,000,000 in financial assistance while maintaining a balanced budget.
- The Y operates 11 Ys across the Eastern Shore of Maryland and Virginia and has a proven track record of success in raising fund and building new community YMCAs.



CONNECTING COMMUNITIES
YMCA OF THE CHESAPEAKE, INC.

The YMCA of the Chesapeake has served the Eastern Shore since 1857.

We work side-by-side with our neighbors to address critical community needs that help kids develop into smart, resilient adults; for people to improve their health and well-being; for our most vulnerable young people to get the care and support they need; and to create a space where our community can come together as one.

YMCA OF THE CHESAPEAKE

- 1 Cecil County Family YMCA
25 YMCA Boulevard
Elkton, MD 21921
410.398.2333
- 2 Kent County Family YMCA
800 High Street
Chestertown, MD 21620
410.778.3148

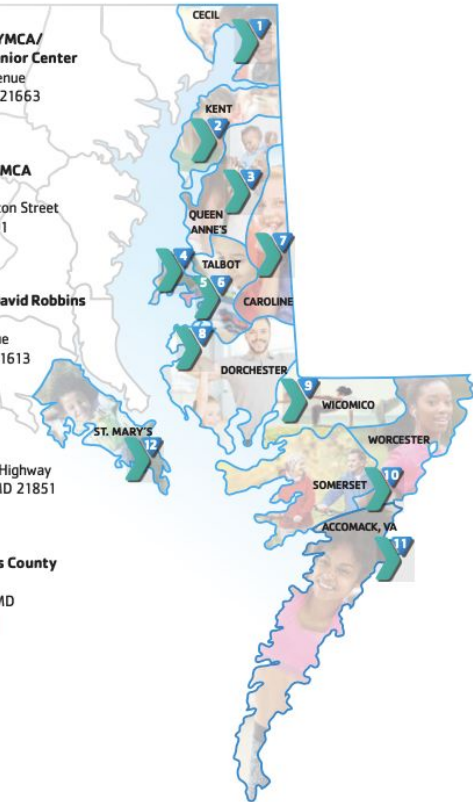
- 3 Queen Anne's County Family YMCA
210 Vincit Drive
Centreville, MD 21617
443.262.9994
- 4 Perkins Family YMCA/
Bay Hundred Senior Center
300 Seymour Avenue
St. Michaels, MD 21663
410.745.5963

- 5 Easton Family YMCA @Peachblossom
202 Peach Blossom Road
Easton, MD 21601
410.822.0566
- 6 Easton Family YMCA @Washington
1180 S. Washington Street
Easton, MD 21601
410.822.1515

- 7 Caroline County Family YMCA
46 Denton Plaza
Denton, MD 21629
410.479.3060
- 8 Pauline F. & W. David Robbins Family YMCA
201 Talbot Avenue
Cambridge, MD 21613
410.221.0505

- 9 Richard A. Henson Family YMCA
715 S. Schumaker Drive
Salisbury, MD 21804
410.749.0101
- 10 Lower Shore Family YMCA
1900 Worcester Highway
Pocomoke City, MD 21851
410.957.9622

- 11 David Landsberger Family YMCA
6395 Maddox Boulevard
Chincoteague Island, VA 23336
757.336.6266
- 12 YMCA St. Mary's County Family YMCA
Lexington Park, MD
COMING SOON!



YMCACHESAPEAKE.ORG

YMCA Association Office
111-1 East Dover Street
Easton, MD 21601
410.770.3890



CONNECTING COMMUNITIES
YMCA OF THE CHESAPEAKE, INC.

YOUTH DEVELOPMENT

GOAL: Providing expanded youth programs designed to help children learn, grow, and thrive!

ACTIONS: Our YMCA will provide new youth programs that will include:

- Summer Camps
- Swim Lessons
- Early Learning
- Leaders Club
- Youth Wellness Programs
- After School
- Youth Sports
- Home School PE
- Lifeguard Training
- Water Safety
- Summer Learning
- 6th Grade Membership Initiative
- Mentoring



CONNECTING COMMUNITIES
YMCA OF THE CHESAPEAKE, INC.





HEALTHY LIVING

GOAL: Work with community partners to improve the health of people by providing them programs and services that make them feel empowered.

ACTIONS: Our YMCA will provide a variety of health and wellness programs that support individuals, families and the community in their quest to live a healthy lifestyle.

New Wellness Programs and Services will include:

- Expanded group exercise classes
- Rock Steady Boxing (Parkinson's)
- Blood pressure management
- Diabetes prevention
- Youth obesity program
- Nutrition education
- LiveSTRONG at the YMCA
- Enhance Fitness



CONNECTING COMMUNITIES
YMCA OF THE CHESAPEAKE, INC.



SOCIAL RESPONSIBILITY

GOAL: Create an environment where everyone, regardless of income, age, or background, feels a sense of belonging and has the opportunity to thrive.

ACTION: Create a culture of volunteerism and philanthropy – encouraging an appreciation of “helping others.”



CONNECTING COMMUNITIES
YMCA OF THE CHESAPEAKE, INC.



THE NEW 60,000 SQ FT YMCA FACILITY WILL INCLUDE:

- State of the art wellness center
- Six lane pool with easy entry and space for swim lesson and young swimmers
- Double gymnasium including two full size basketball courts, 4 basketball halfcourts, six pickleball courts, 2 volleyball courts
- Elevated Indoor walking track
- 5 indoor multiple purpose spaces
- Stay and play area for our youngest participants
- Community meeting spaces
- Teaching kitchen
- Social spaces
- A place to connect to other seniors, preventing isolationism among seniors who have lost a spouse.
- A place where everyone feels welcomed and comes together as a community.



CONNECTING COMMUNITIES
YMCA OF THE CHESAPEAKE, INC.

EXISTING GREAT MILLS POOL

GREAT MILLS POOL

YMCA

NEW PLAZA

GREAT MILLS HIGH SCHOOL

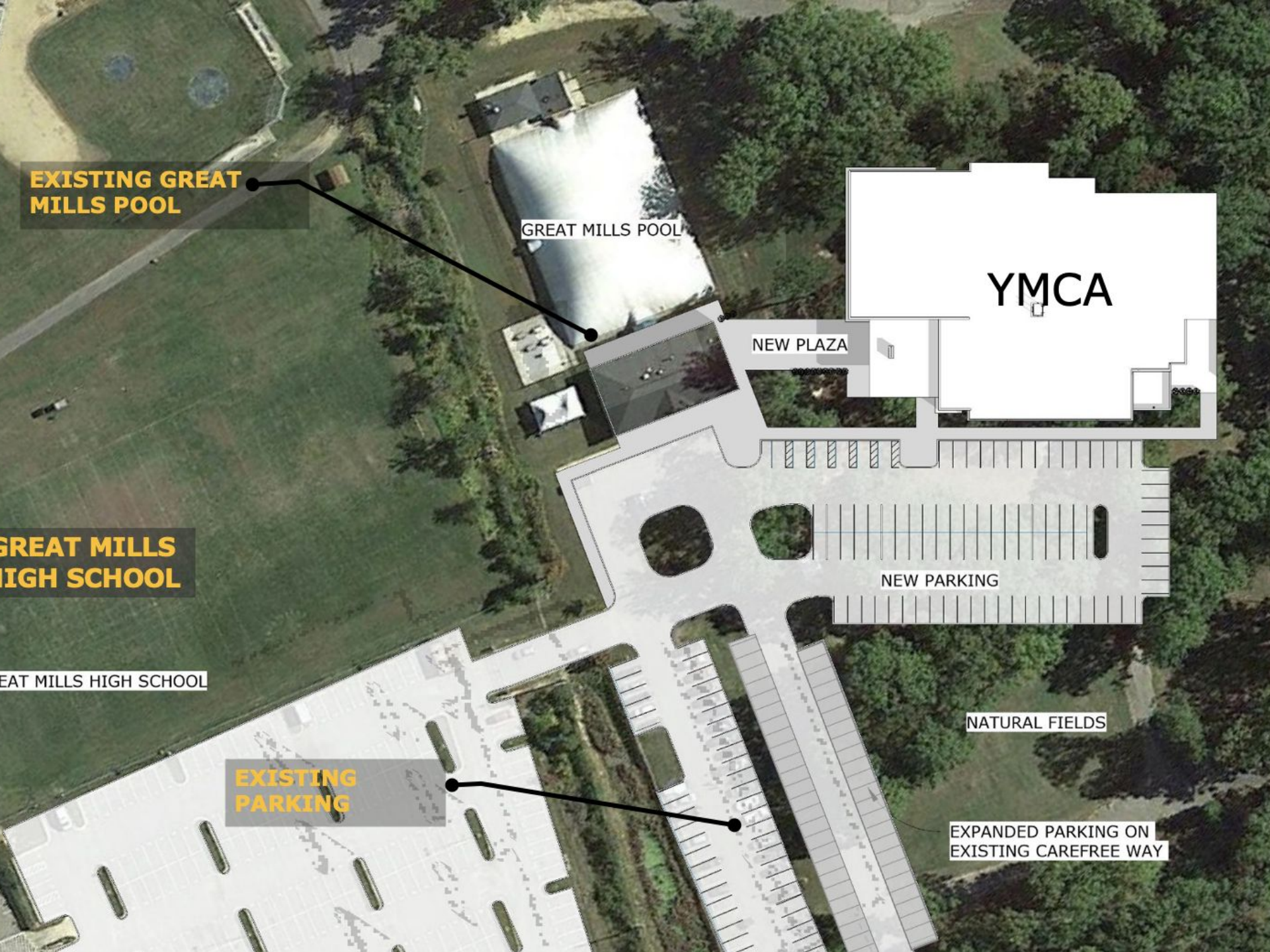
NEW PARKING

GREAT MILLS HIGH SCHOOL

EXISTING PARKING

NATURAL FIELDS

EXPANDED PARKING ON EXISTING CAREFREE WAY





St. Mary's Family YMCA



Conceptual Rendering – Exterior



St. Mary's Family YMCA



Conceptual Rendering – Exterior



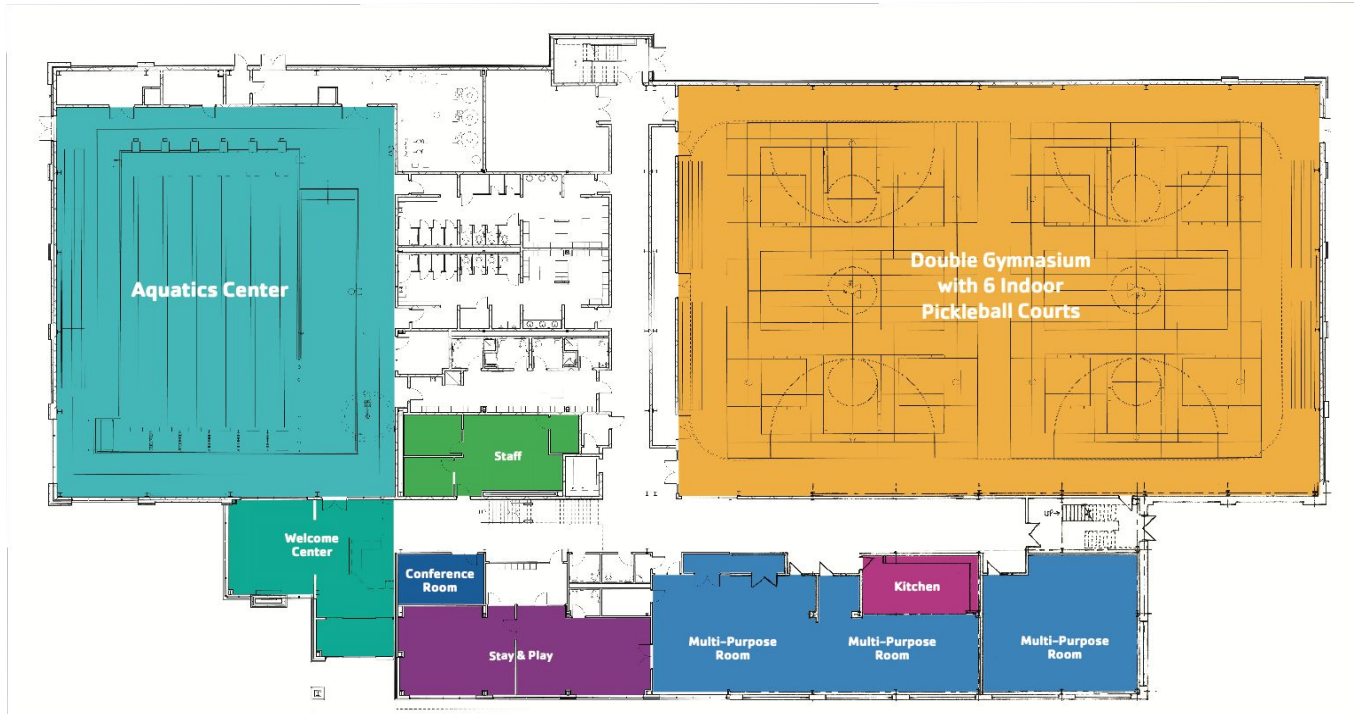
Conceptual Rendering – Aerial View



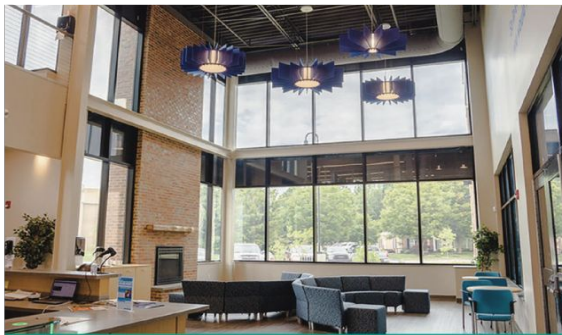
Conceptual Rendering – Bird's Eye View



St. Mary's County Family YMCA



Main Level



Welcome Center



Aquatics Center



Gymnasium



St. Mary's County Family YMCA



Upper Level



Running Track



Wellness Center



Group Exercise Rooms



KEY PARTNERSHIPS & COLLABORATIONS

YMCAs transform communities through long-term investments in people; strengthening other charities and collaborative partnerships in the region.

What does this look like in other communities?

- Provide free meeting space for outside community groups
- Partner with school districts to support systemic enhancements to curriculum – e.g. Learn to Swim, swim team programming.
- Work with local hospital systems to expand chronic disease programming and establish/maintain referral networks
- Provide free YMCA programming to enhance participation and engagement in partner services – e.g. Summer Meals Program



CONNECTING COMMUNITIES
YMCA OF THE CHESAPEAKE, INC.



Capital Campaign

- County Funding
\$15,000,000
- Community Campaign
\$5,000,000 - \$7,000,000
- State/Federal Funds.
\$0 - \$2,000,000
- Total \$22,000,000

Gifts and pledges can be made over a five - year period



CONNECTING COMMUNITIES
YMCA OF THE CHESAPEAKE, INC.



PROJECT TIMELINE

- Architectural and engineering work is in process
- Quiet phase community campaign November 2023 – March 2024
- Community phase capital campaign April 2024
- Break ground on new YMCA in the fall of 2024 (90% of goal)
- Open new YMCA facility Winter 2026



CONNECTING COMMUNITIES
YMCA OF THE CHESAPEAKE, INC.