



Seedco & Maryland Health Connection

Presented By: Kara Sarikaya & Manuella
Massey
Southern Region Connector Program





About Maryland Health Connection

- The State's insurance marketplace for individuals and families, that may qualify for **low cost** and **no cost** insurance plans.
- No cost plans are based on income and age. These include Medicaid and MCHP, Children's Medicaid.
- Low-cost plans (private/Qualified Health Plans) are also available. People may qualify for financial help to reduce the cost of these health plans.

About Seedco



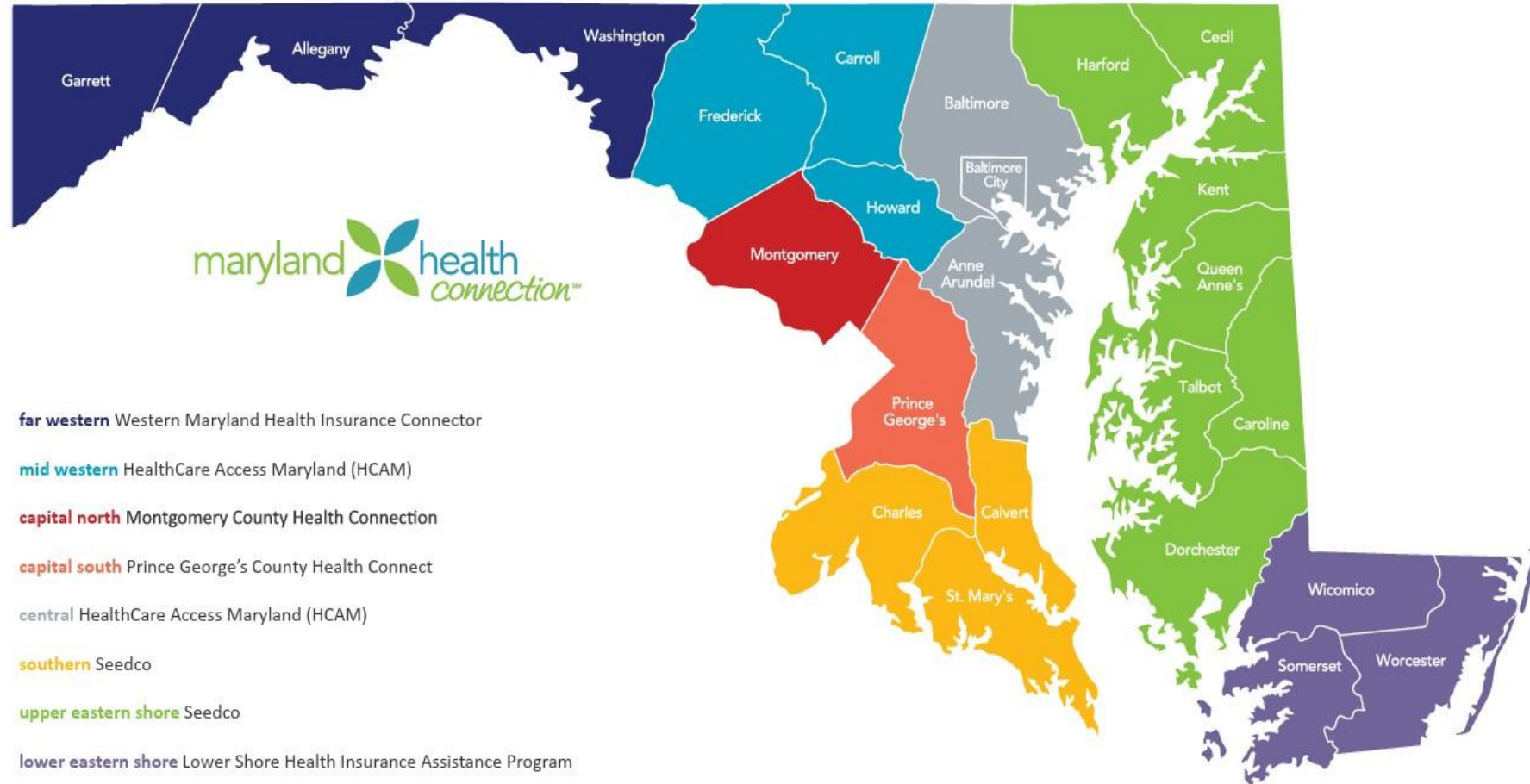
Seedco is a nonprofit organization and the designated partner of the Maryland Health Connection for the Southern Maryland region.

We service Calvert, Charles, and St. Mary's counties.

Seedco's navigators are trained experts that offer services for free:

- Education and enrollment assistance
- Assist in resolving problems with enrollment.
- Health literacy
- Health-care related resources
- Access to Care

Consumer Assistance Regions



Support

Our Mission

1. **Reduce** the uninsured rates in Southern Maryland
2. **Connect** the community to health insurance coverage and provide resources
3. **Educate** about health insurance coverage and health literacy to our community
4. **Improve** overall health and well being

Seedco has a team dedicated to doing outreach and connecting with the community.

Outreach



We would love to support your organization in any way that we can!

Medicaid & MCHP

- No monthly cost
- Can enroll anytime during the year
- Must meet immigration status & income requirements
- MCHP ends at age 19
- Eligibility calculated based on:
 - Household Size
 - Household Income
 - Age of Applicant

Medicaid Monthly Income Limits

Household Size	Adults 19+	Children (MCHP/ Premium)	Pregnant Women
1	\$1,732	\$4,041	N/A
2	\$2,352	\$5,487	\$4,499
3	\$2,970	\$6,929	\$5,681
4	\$3,588	\$8,372	\$6,864
5	\$4,208	\$9,818	\$8,049
6	\$4,826	\$11,260	\$9,232
7	\$5,444	\$12,703	\$10,415
8	\$6,064	\$14,149	\$11,600
Each person add	\$620	\$1,446	\$1,185

Qualified Health Plans

What are they?

- Health insurance plans like one you would get from an employer.
- Individuals may qualify for financial help to reduce the cost of monthly premiums
- Plans have copays and deductibles

Do I qualify?

- Must be lawfully present
- May not have an offer of *affordable* coverage from job, spouse's, or parent's health plans
- Must not be eligible for Medicare

Open Enrollment & Special Enrollment

Open Enrollment runs November 1st through January 15th every year. Special enrollments outside of this time-period must meet criteria below.

Special Enrollment

Reasons:

Losing health coverage

Having or adopting a child

Some changes to immigration status
Losing Medicaid Coverage

Getting married or divorced
Moving to Maryland

Turning 26

And more!

60 days to enroll after qualifying event

Immigration Status

Only family members seeking coverage need to provide immigration status information.

Your information will be protected.
No other state agencies will be able to access your information.

Applying for health insurance will not affect applications for permanent residency or citizenship.



How to Apply

- Call Maryland Health Connection Call Center
1-855-642-8572
- Apply online at marylandhealthconnection.gov
- In person with a local Seedco navigator:

Southern Hotline

1-855-339-3007

Hours

**Mondays through
Fridays**

**9:00 AM to 4:00
PM**

Saint Mary's County

22330 Chancellors
Run Road, Unit E
Great Mills, MD
20634

Charles County

3 Post Office Road
Unit 102
Waldorf, MD 20602

Calvert County

Calvert County Health
Department
Fridays, bi-weekly

MarylandHealthConnection.go

v

#GetCoveredMD

Contact Information

Kara Sarikaya
Outreach Manager
Phone: 240-717-5438
Email: ksarikaya@seedco.org

Manuella Massey
Bilingual Outreach Specialist
Phone: 240-591-8272
Email: mmassey@seedco.org



@SeedcoMaryland
@MarylandConnect

