

# Hypertension Landscape Analysis

**Please complete by  
June 16, 2026.**

## **What is the purpose of this survey?**

The survey data will be used to create an actionable inventory of programs and initiatives that address hypertension intervention and management. Additionally, we are looking to include programs that address other contributors to increased risk of hypertension, such as food insecurity and physical activity.

**SCAN  
ME!**

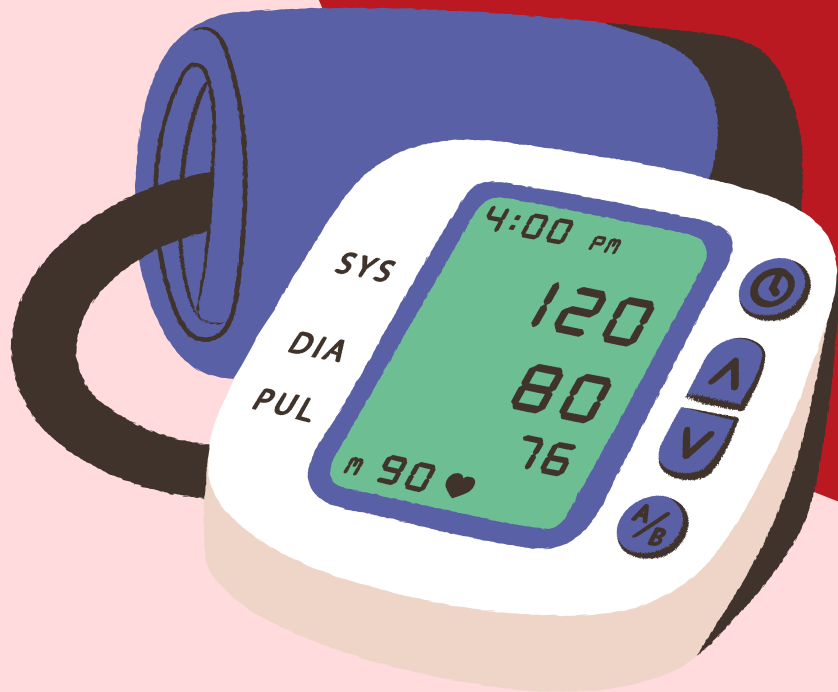


# FAQ

SCAN  
ME!



Please complete by  
**June 16, 2026**



1

## Who should complete the survey?

Organizations that offer services, programs, or other initiatives focused on early intervention and management of hypertension in adults. This includes:

- Clinical interventions
- Community-based programs
- Systems-change initiatives
- Programs specifically aimed at reducing barriers to care and management

2

## Why should organizations participate?

- Ensure your program is included in a comprehensive list circulated to partners across the state.
- To inform your own organization's strategic planning and partnership development.
- Contribute to a stronger, more coordinated approach to address hypertension in Maryland.

3

## What information is requested?

The survey asks for details regarding the reach and utilization of your programs, how you measure success, and whether your initiatives offer evidence-based practices. We encourage you to include all programs that address hypertension directly or its key drivers, such as food insecurity and physical activity.